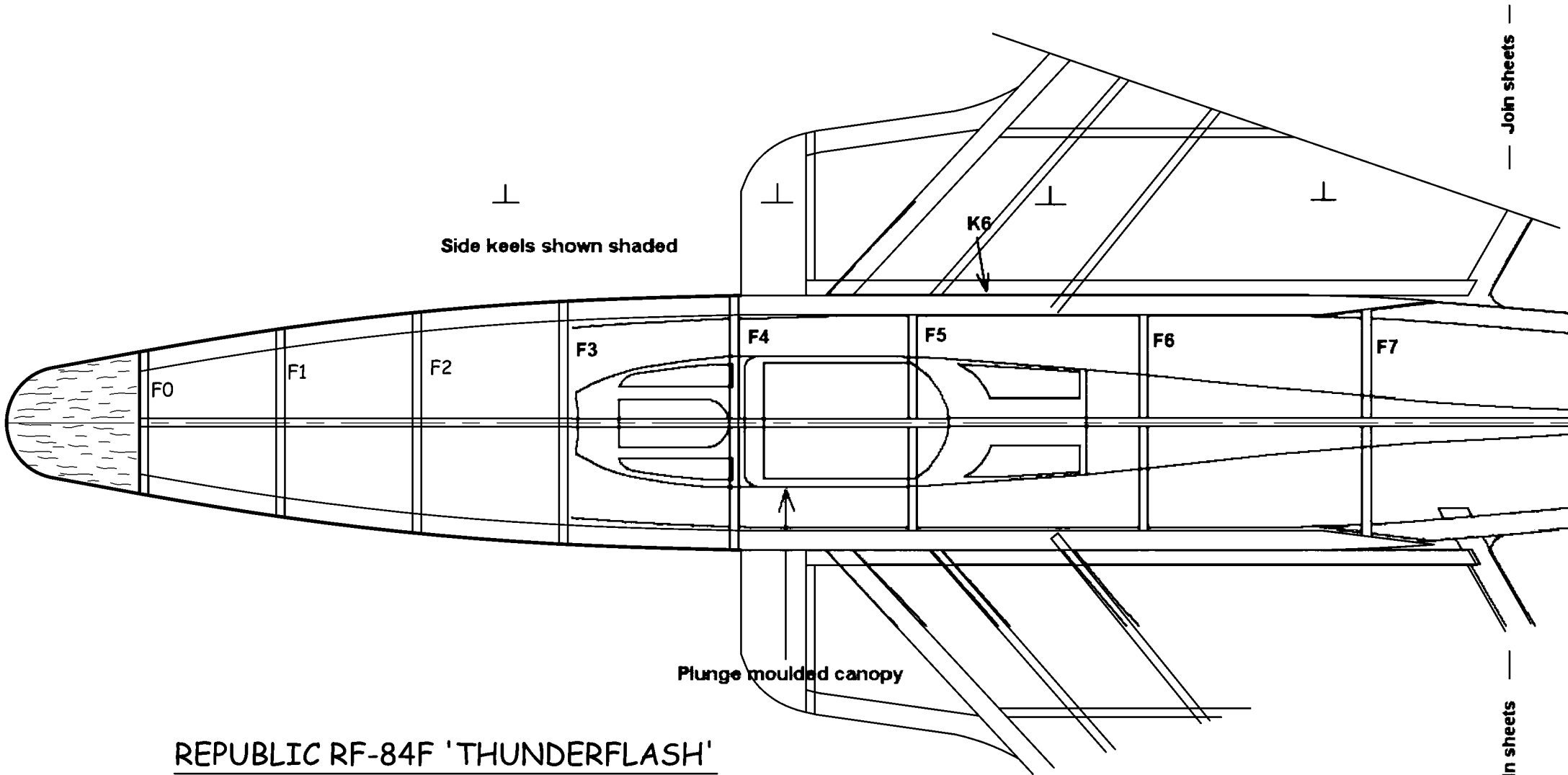


REPUBLIC RF-84F 'THUNDERFLASH'

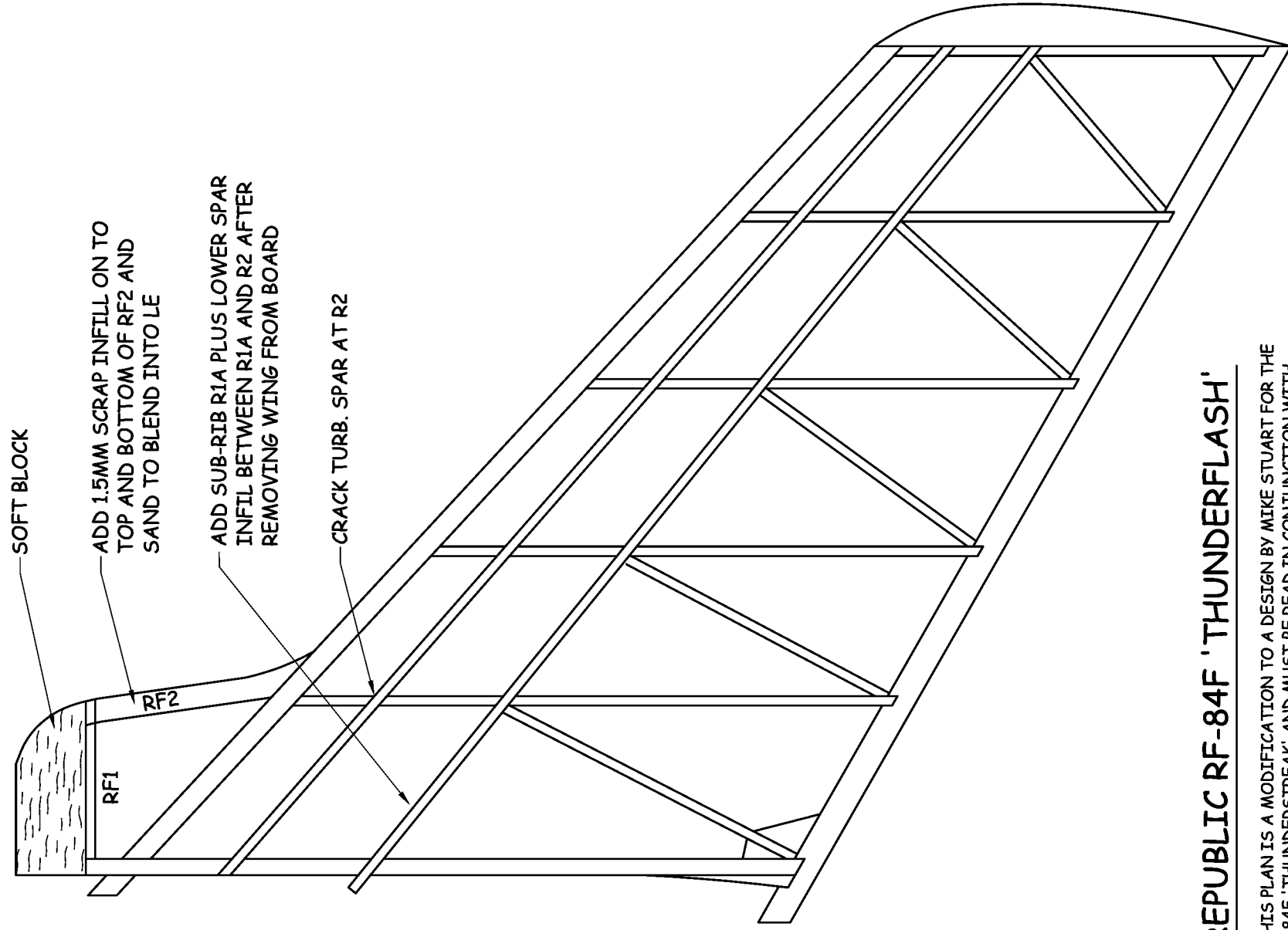
THIS PLAN IS A MODIFICATION TO A DESIGN BY MIKE STUART FOR THE F-84F 'THUNDERSTREAK' AND MUST BE READ IN CONJUNCTION WITH MIKE'S ORIGINAL PLAN

↑ K3
 For clarity not all stringers shown
 Motor mount from rolled notepaper
 Wire retaining clip
 Raper L2 motor
 MY RF-84F HAD MOTOR MOVED BACK BY 12mm FROM PLAN POSITION



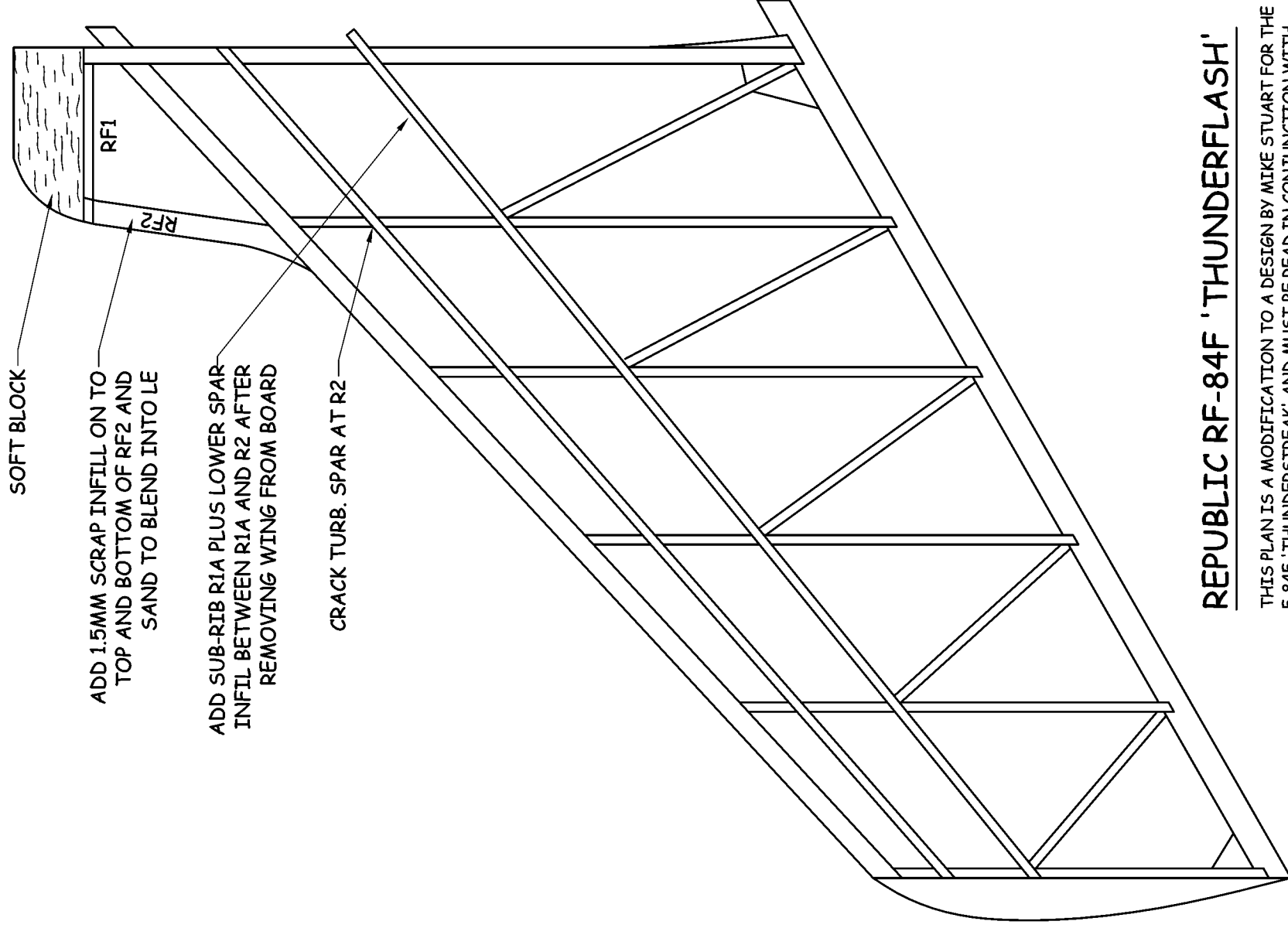
REPUBLIC RF-84F 'THUNDERFLASH'

THIS PLAN IS A MODIFICATION TO A DESIGN BY MIKE STUART FOR THE F-84F 'THUNDERSTREAK' AND MUST BE READ IN CONJUNCTION WITH MIKE'S ORIGINAL PLAN



REPUBLIC RF-84F 'THUNDERFLASH'

THIS PLAN IS A MODIFICATION TO A DESIGN BY MIKE STUART FOR THE F-84F 'THUNDERSTREAK' AND MUST BE READ IN CONJUNCTION WITH MIKE'S ORIGINAL PLAN



SOFT BLOCK

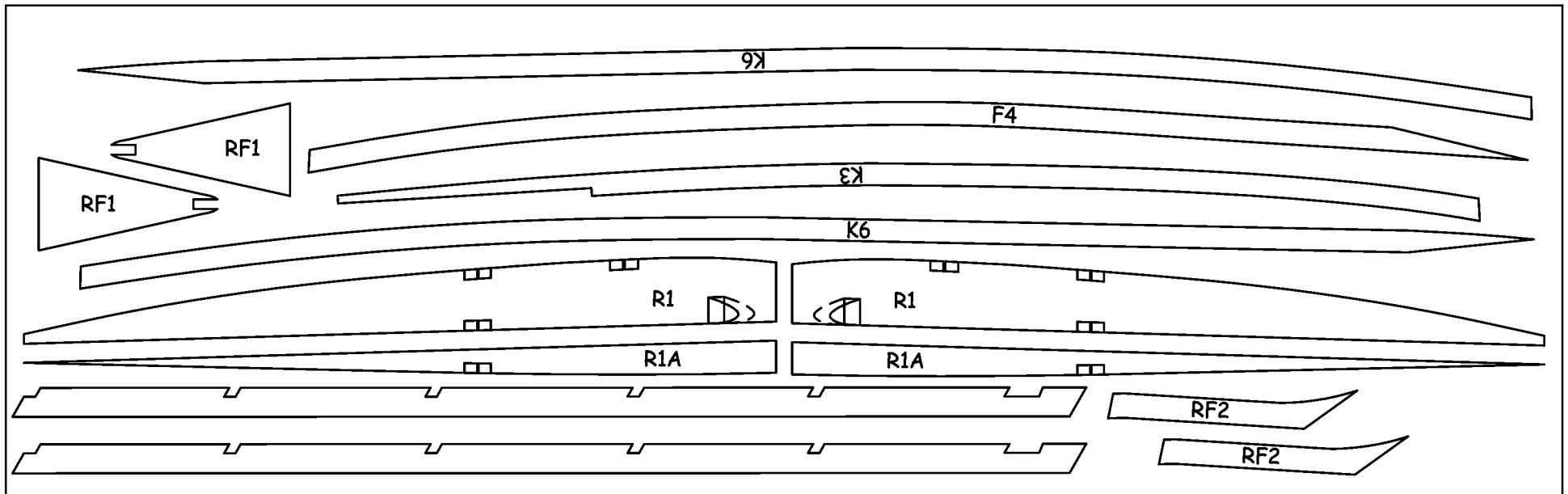
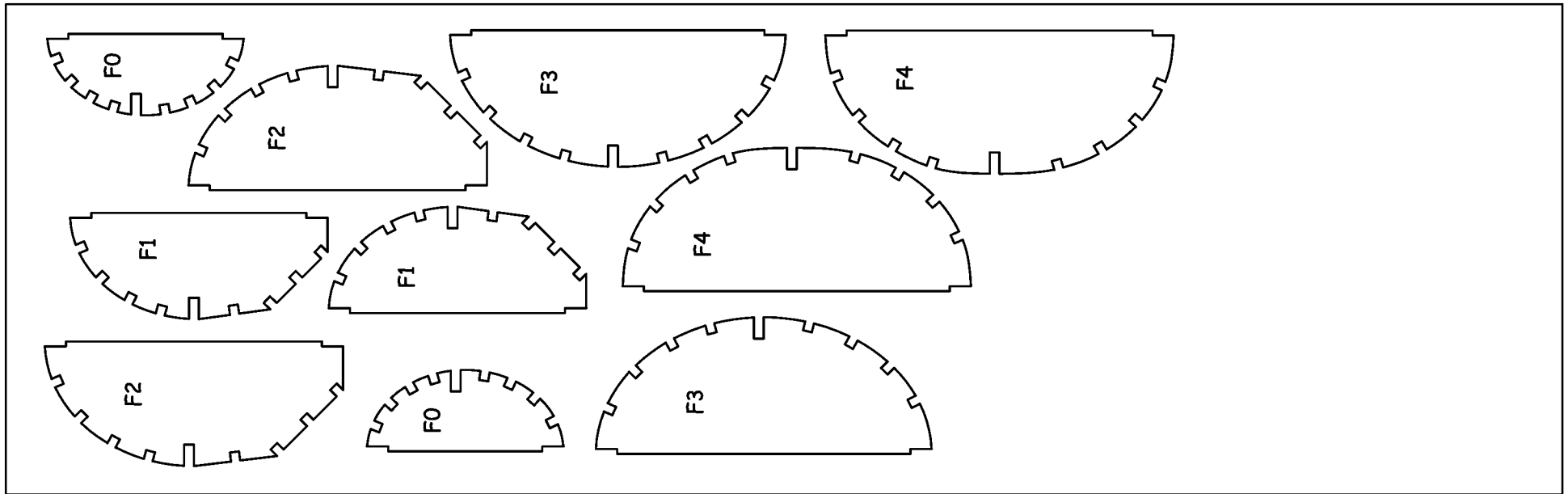
ADD 1.5MM SCRAP INFILL ON TO
TOP AND BOTTOM OF RF2 AND
SAND TO BLEND INTO LE

ADD SUB-RIB R1A PLUS LOWER SPAR
INFIL BETWEEN R1A AND R2 AFTER
REMOVING WING FROM BOARD

CRACK TURB. SPAR AT R2

REPUBLIC RF-84F 'THUNDERFLASH'

THIS PLAN IS A MODIFICATION TO A DESIGN BY MIKE STUART FOR THE
F-84F 'THUNDERSTREAK' AND MUST BE READ IN CONJUNCTION WITH
MIKE'S ORIGINAL PLAN



REPUBLIC RF-84F 'THUNDERFLASH'

THIS PLAN IS A MODIFICATION TO A DESIGN BY MIKE STUART FOR THE F-84F 'THUNDERSTREAK' AND MUST BE READ IN CONJUNCTION WITH MIKE'S ORIGINAL PLAN