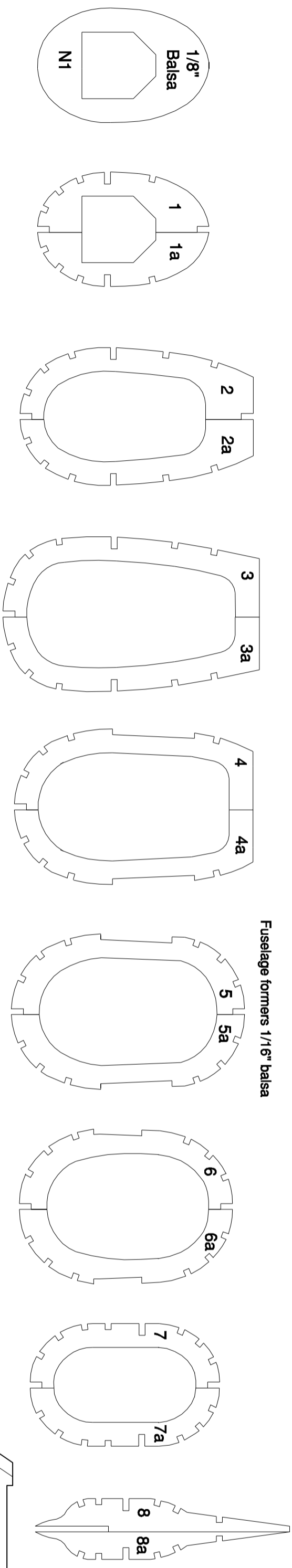


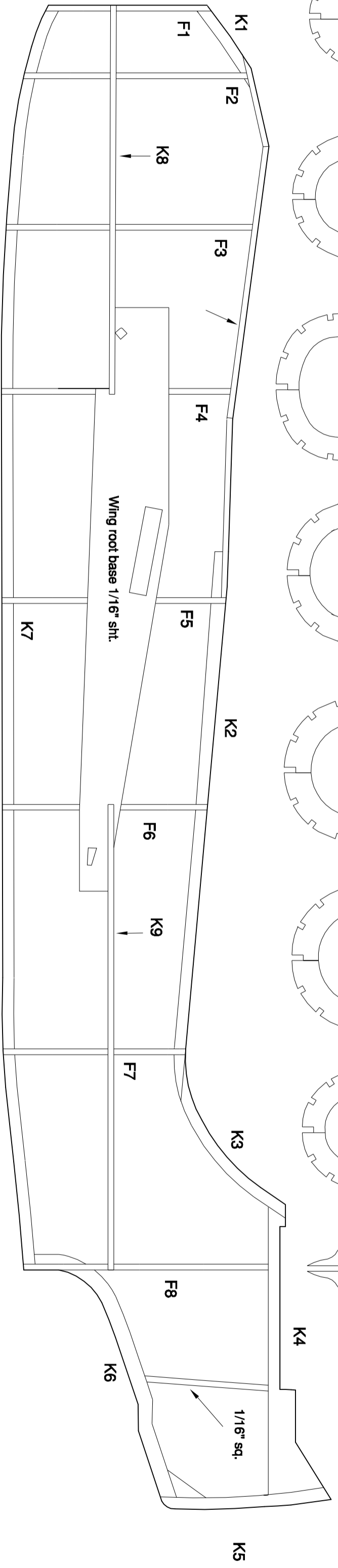
Short Seamew AS.1
22" span free flight scale
model for rubber power
 designed and drawn by Mike Stuart
 Page 1 of 2



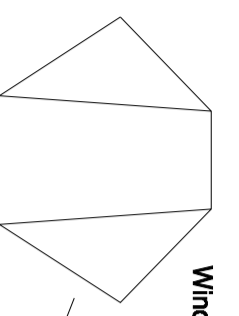
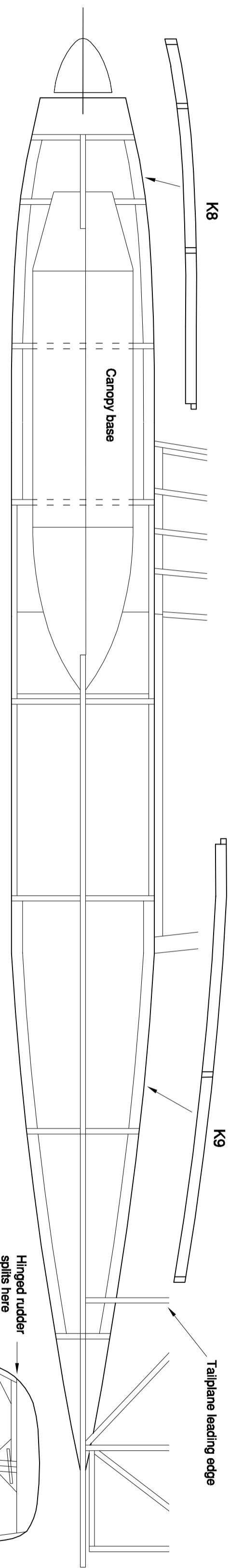
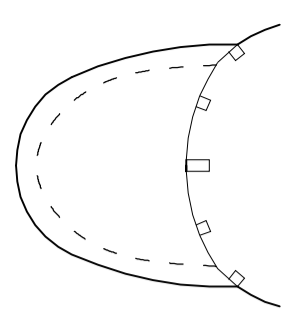
Pin keels K1 to K7 to plan, add half formers F1 to F9, the wider canopy base half, keels K8 and K9 and wing root base

Remove from board, add formers F1a to F9a and the remaining side keels, canopy base half and other wing root base

1/16" sq. stringers next added alternately left and right to avoid bowing

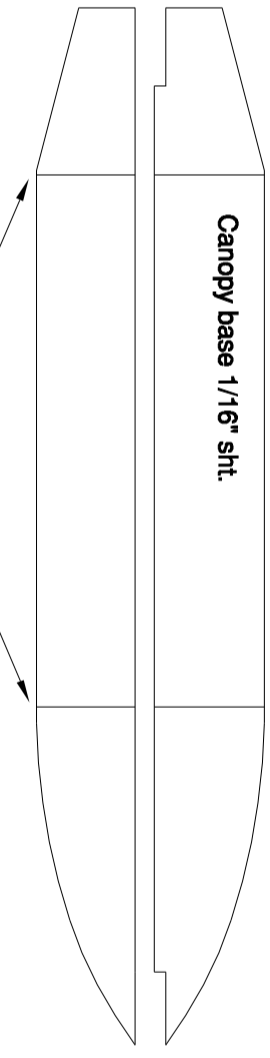


Section through radome



Windshield pattern

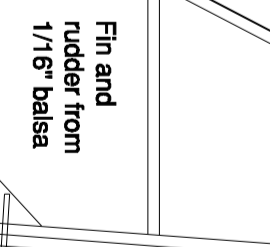
Commercial canopy designed for Frog 22" Seamew kit



Canopy base 1/16" sq.

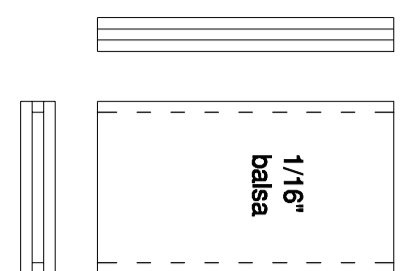
Score and crack

Hollow soft block



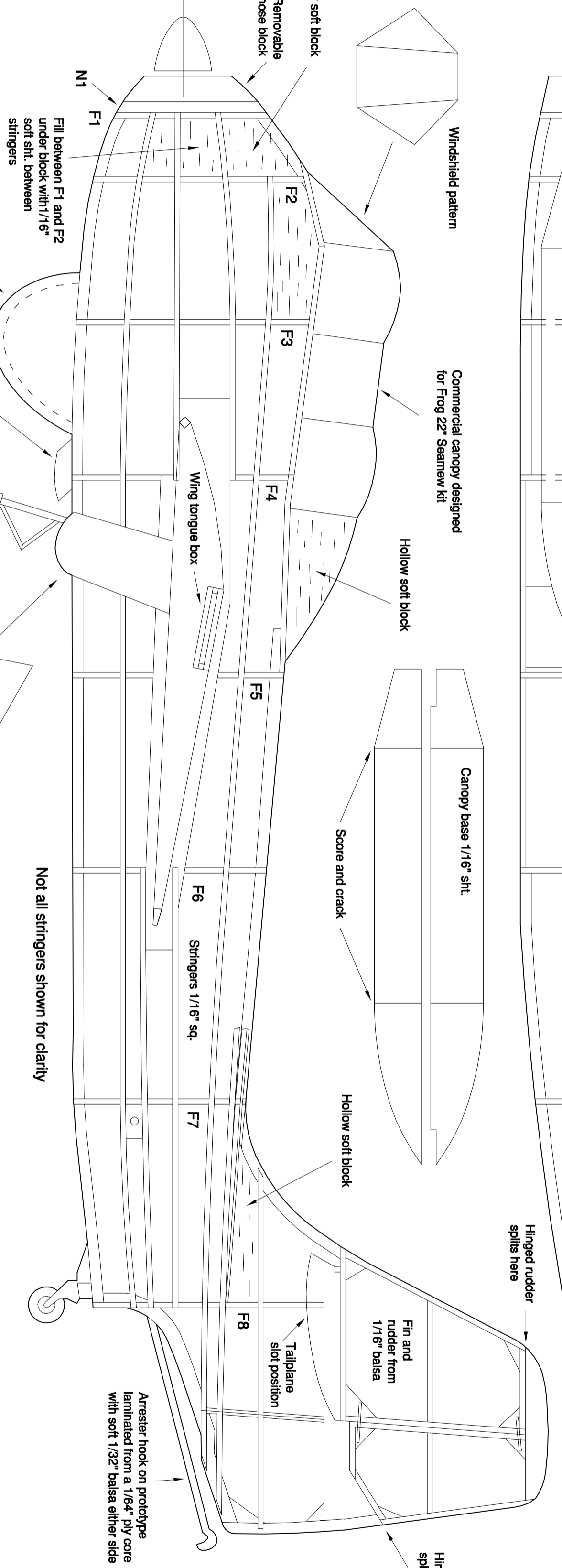
Fin and rudder from 1/16" balsa

Hinged rudder splits here



Wing tongue location box fits across fuselage

1/16" balsa



Use 8" prop unless you need to ROG

Not all stringers shown for clarity

Pattern for undercarriage fairing from notepaper. Glue to wing but leave bottom open so wire is free to move inside fairing