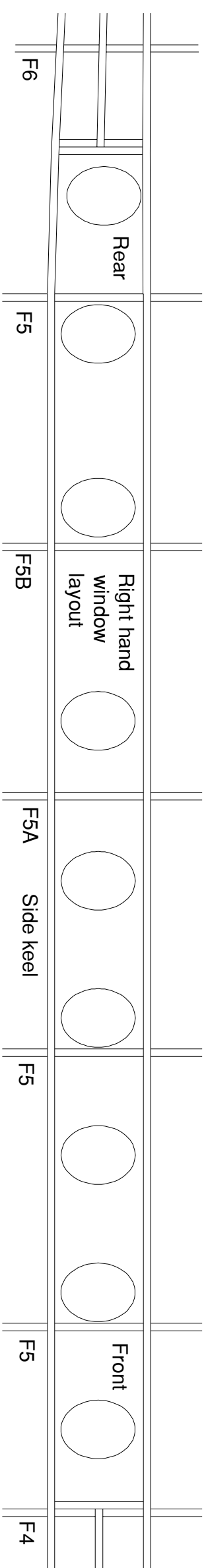
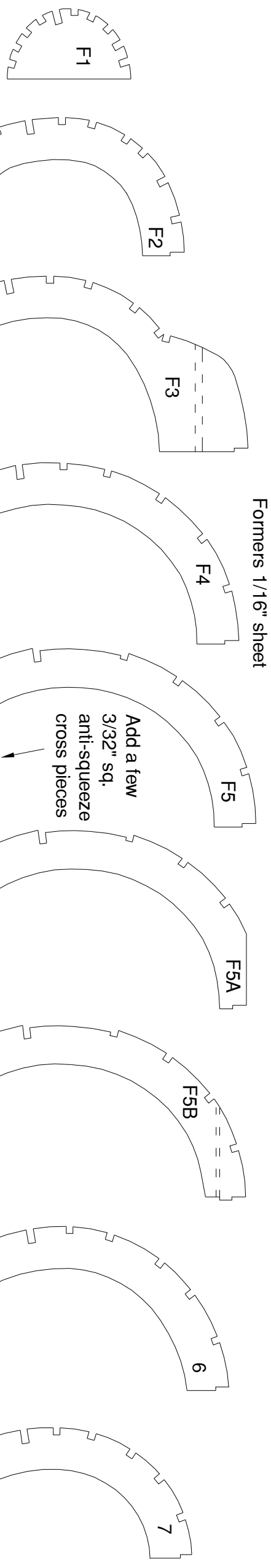
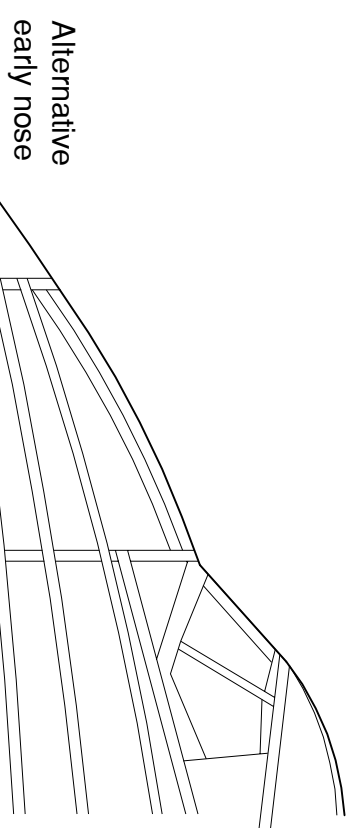
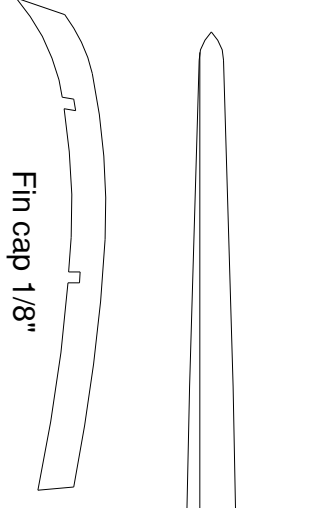


Handley Page Dart Herald
33" span rubber powered
flying scale model
 Designed and drawn by
 Mike Stuart
 sheet 1 of 2



Add a few 3/32" sq. anti-squeeze cross pieces

Remove material after assembly to allow tailplane to slide through



Fin base 1/8" sheet

Fin spars 1/16" balsa

Build fin flat on plan then add pieces for opposite side

1

2

Soft block

Support for 1/32" sheet

Wing platform sides glued to stringers

Support for 1/32" sheet

Air intake from soft block

LE 1/8"

Fin ribs 1/16" balsa

Hinged trim tab 1/8" sht.

Soft wire

TE 1/8"

1/8" sheet sanded to taper at bottom

Sheet insert for tailplane mount 1/16" sheet

Cockpit roof 1/16" balsa (2 off)

Top two stringers cut from 1/16" sheet

Soft block

Soft block

Fill corner with soft block

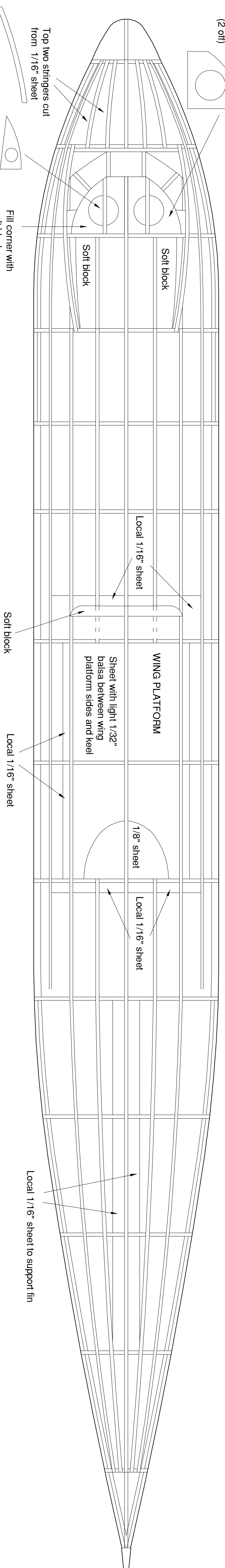
Local 1/16" sheet

WING PLATFORM
 Sheet with light 1/32" balsa between wing platform sides and keel

1/8" sheet

Local 1/16" sheet

Local 1/16" sheet to support fin



Remove this section after adding stringers

Keels laminated from two pieces of 1/16" square balsa

Straight section of side keels from 1/16" x 1/8" balsa

Keel laminated from two pieces of 1/16" square balsa

